

# Willow

---



2,528 sq ft • 3 Bedrooms, 3 Baths

*Welcome to the Family*

— The Wynsor Homes Family

You'll be able to entertain in style in the spacious family room; it features a high ceiling where you can gather around the fireplace. The nearby kitchen will keep the appetizers and other refreshments within easy reach. Also impressive is the master suite with a raised ceiling, large walk-in closet and a beautiful private bath. Each of the secondary bedrooms has walk-in closets and their own bath.



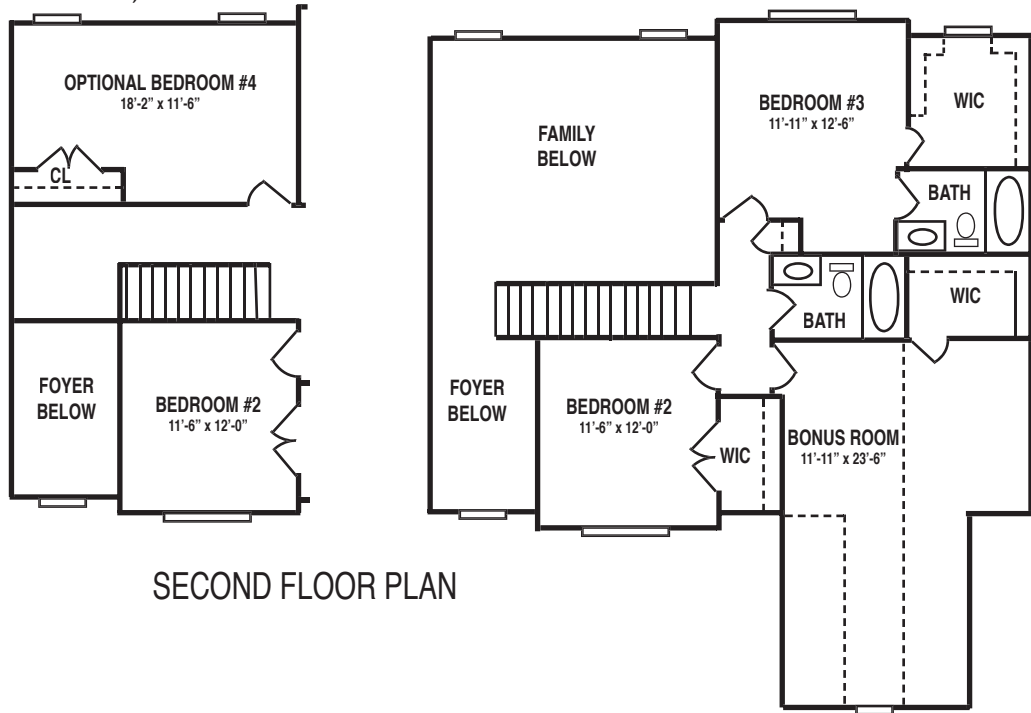
Preliminary drawings are for illustration only and may vary in precise detail from the plans and specifications. Drawings are shown with some available options and upgrades.

WYNSOR HOMES

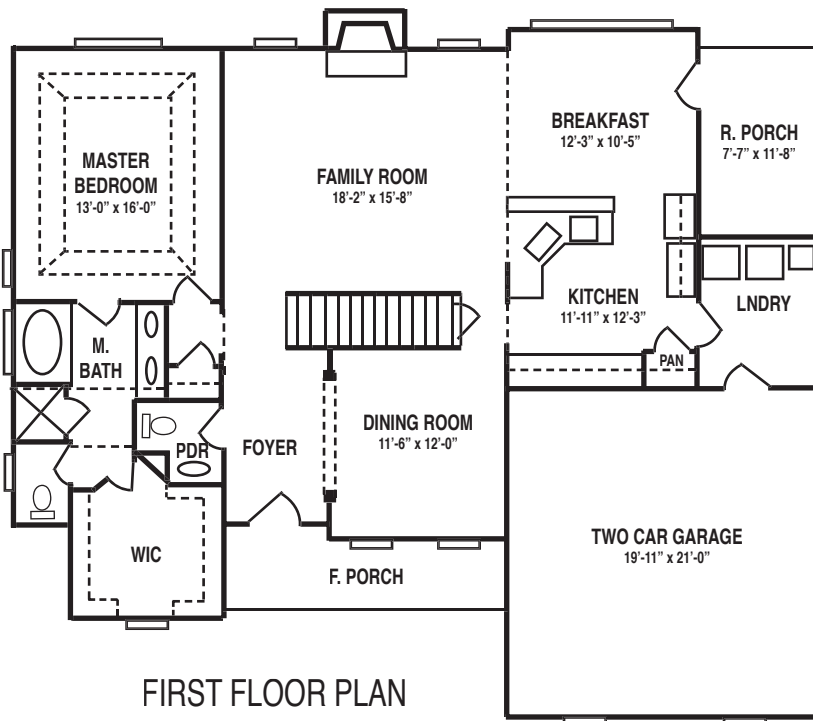
wynsorhomes.com

# WILLOW

2,528 sq ft • 3 Bedrooms, 3 Baths



SECOND FLOOR PLAN



FIRST FLOOR PLAN



All plans and specifications or pricing are estimates and are subject to change.